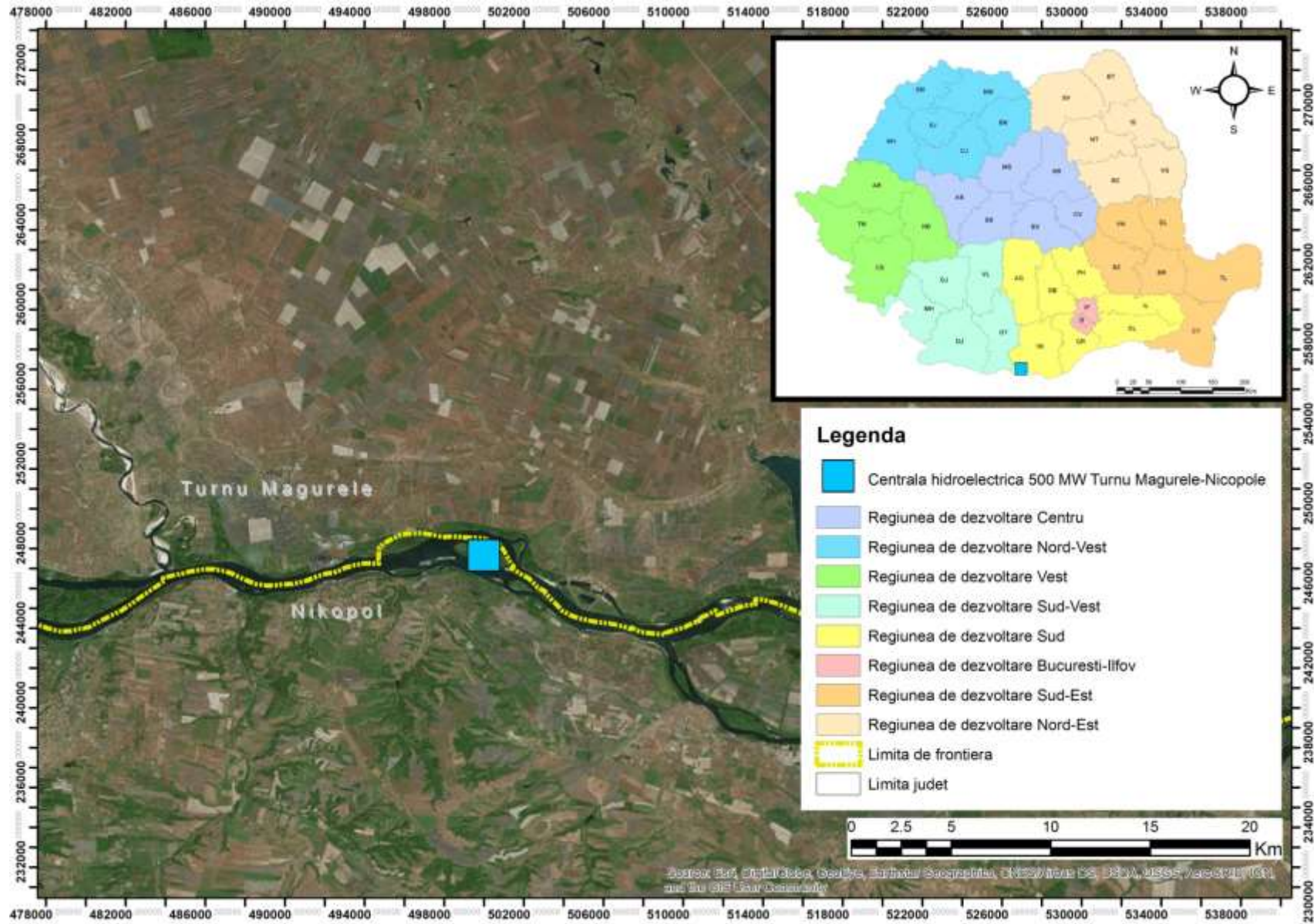


ANNEX 7 - Realization of a hydroelectric power station at Turnu Magurele - Nicopole 500 MW



ANNEX 7 – Realization of a hydroelectric power station at Turnu Magurele - Nicopole 500 MW



ANNEX 7 – Realization of a hydroelectric power station at Turnu Magurele - Nicopole 500 MW

